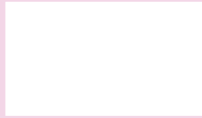
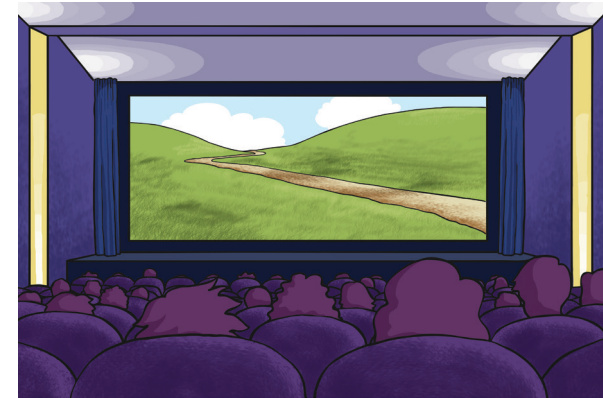


Two Step Addition and Subtraction Word Problem Challenge Cards



Two Step Addition and Subtraction Word Problem

A movie theatre has 700 seats and is showing the latest blockbuster. If 113 adults and 276 children come to see the movie, how many seats are left empty?



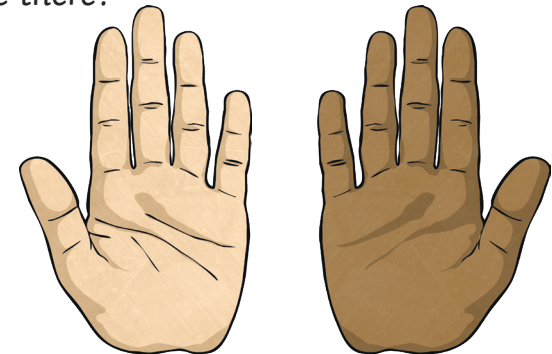
Two Step Addition and Subtraction Word Problem

Mia is saving for a new bike that costs \$286. If she already has \$39 and is then given \$59 for her birthday, how much more does she need to save?



Two Step Addition and Subtraction Word Problem

A school decided to work out how many were left or right handed students there are. The school has 900 students, 687 were right handed and 174 were left handed, the rest could use either hand (ambidextrous). How many ambidextrous students were there?



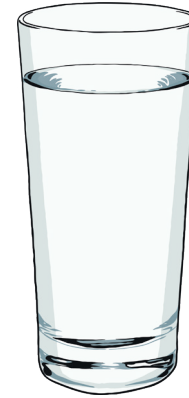
Two Step Addition and Subtraction Word Problem

Oliver is doing a walk-a-thon on Saturday where he needs to take 875 steps each hour. If he decides to spend some time playing a video game and only walks 323 steps one hour, how many steps should he take to catch up in the next hour?



Two Step Addition and Subtraction Word Problem

Ava and Chris are trying to drink more water. Chris drinks 1485ml each day and Ava drinks 1760ml each day. If Chris drinks an extra 217ml glass today, how much less water has he had than Ava?



Two Step Addition and Subtraction Word Problem

A school garden has 2036 seeds to plant. So far they have already planted 1564 and today they planted another 57. How many seeds are left?



Two Step Addition and Subtraction Word Problem

Answers

1. $700 - (113 + 276) = 311$ Empty Seats
2. $\$286 - (\$39 + \$59) = \188 more to save
3. $900 - (687 + 174) = 39$ ambidextrous people
4. $(875 - 323) + 825 = 1427$ steps
5. $1760\text{ml} - (1485 + 217\text{ml}) = 58\text{ml}$ less
6. $2036 - (1564 + 57) = 415$ seeds

